

Spare Parts for Valves and Fill Cluster

Type 55318, Type 55317 - Handwheel



for Cryogenic Globe Valves

Aluminium Handwheels

Part No.	Nominal size Globe Valve	colour
55318.0001.0402	DN10 - DN25	white (RAL 9010)
55318.0002.0402	DN32 - DN50	white (RAL 9010)

Part No.	Nominal size Globe Valve	colour
55317.0021.0402	DN65	silver (natural)
55317.0022.0402	DN80	silver (natural)
55317.0068.0402	DN100	silver (natural)
55317.0016.0402	DN150	silver (natural)
55317.0106.0402	DN200	silver (natural)

for Cryogenic Bellow sealed Valves

Part No.	Nominal size Bellow sealed Valve	colour
55317.0029.0402	DN10 - DN50	silver (natural)

for Cryogenic Gate Valves

Part No.	Nominal size Gate Valve	colour
55318.0002.0402	DN25 - DN40	white (RAL 9010)
55317.0029.0402	DN50 - DN80	silver (natural)
55317.0020.0402	DN100	silver (natural)



Handwheels (available colours) for Cryogenic Globe Valves DN10 - DN50

Part No.	Nominal size	colour
55318.0016.0402	DN10 - DN25	silver (natural)
55318.0017.0402	DN32 - DN50	silver (natural)



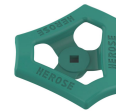
Part No.	Nominal size	colour
55318.0004.0402	DN10 - DN25	red (RAL 3000)
55318.0005.0402	DN32 - DN50	red (RAL 3000)



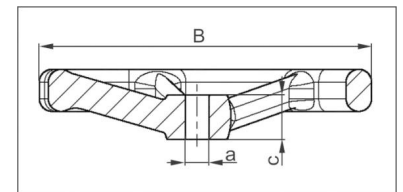
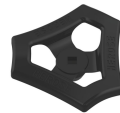
Part No.	Nominal size	colour
55318.0007.0402	DN10 - DN25	blue (RAL 5015)
55318.0008.0402	DN32 - DN50	blue (RAL 5015)



Part No.	Nominal size	colour
55318.0010.0402	DN10 - DN25	green (RAL 6005)
55318.0011.0402	DN32 - DN50	green (RAL 6005)



Part No.	Nominal size	colour
55318.0013.0402	DN10 - DN25	black (RAL 9011)
55318.0014.0402	DN32 - DN50	black (RAL 9011)



Type 55318	Technical data				Type 55317								
		.0001.0402		.0002.0402									
		.0004.0402		.0005.0402									
		.0007.0402		.0008.0402	.0016.0402	.0020.0402	.0021.0402	.0022.0402	.0029.0402	.0068.0402	.0106.0402		
		.0010.0402		.0011.0402									
		.0013.0402		.0014.0402									
		.0016.0402		.0017.0402									
Handwheel-Ø	B	100		125	360	200	200	250	150	315	630		
Square	a	7		10	15	12	10	10	10	12	27		
Hub height	c	15		19.5	35.0	30.0	20.5	20.0	19.0	33.0	56.0		
Weight	ca. kg	0.1		0.15	3.4	0.85	0.8	0.15	0.35	2.5	9.7		

Dimensions in mm.