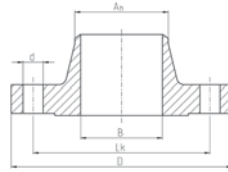


Dimensions of ANSI flanges



DN = Nominal diameter
D = Diameter of flange
Lk = Diameter of bolt circle
n = Number of holes
d = Diameter of holes
B = Flange bore
A_n = Outside diameter butt weld



				Class 150				Class 300			
DN		B	A _n	D	Lk	n	d	D	Lk	n	d
15	1/2"	15.8	21.3	90	60.3	4	15.9	95	66.7	4	15.9
20	3/4"	20.9	26.7	100	69.9	4	15.9	115	82.6	4	19.0
25	1"	26.6	33.4	110	79.4	4	15.9	125	88.9	4	19.0
32	1-1/4"	35.1	42.2	115	88.9	4	15.9	135	98.4	4	19.0
40	1-1/2"	40.9	48.3	125	98.4	4	15.9	155	114.3	4	22.2
50	2"	52.5	60.3	150	120.7	4	19.1	165	127.0	8	19.0
65	2-1/2"	62.7	73.0	180	139.7	4	19.1	190	149.2	8	22.2
80	3"	77.9	88.9	190	152.4	4	19.1	210	168.3	8	22.2
100	4"	102.3	114.3	230	190.5	8	19.1	255	200.0	8	22.2
125	5"	128.2	141.3	255	215.9	8	22.2	280	235.0	8	22.2
150	6"	154.1	168.3	280	241.3	8	22.2	320	269.9	12	22.2
200	8"	202.7	219.1	345	298.5	8	22.2	380	330.2	12	25.4